

Santa Barbara City bicyclist count

June 2009

Thanks for helping the Santa Barbara Bicycle Coalition and the city of Santa Barbara count bicyclists. This will be the tenth June count that Bicycle Coalition volunteers have done since 1997. By continuing a count to see what's happening in our community, we can figure out what conditions increase bicycle ridership.

The counts will take place at 25 locations on your choice of only one day out of six possible days:

Tues June 9 or Wed June 10 or Thurs June 11 or
Tues June 16 or Wed June 17 or Thurs June 18

For a given intersection, we need one count on only one day out of those six. They are 2-hour long sessions that take place during the afternoon commute hours 4:00-6:00 at intersection locations.

Counts of cyclists passing through the intersection are needed, broken into 15-minute intervals, indicating how many approached from what direction & whether they went straight through, or turned left or right. In addition, please also count:

- how many bicyclists are wearing helmets
- how many bicyclists are riding on the sidewalk at that intersection
- how many bicyclists are traveling the wrong way on the street.

What's a bicycle? Any human-powered bicycle, tandem, or trike. Don't count surreys or scooters. Count the number of active people; for example, a tandem with two active riders is two entries, but a child in a trailer is not counted. A person pedaling an electric bike is counted; one not pedaling is not.

If for any reason it looks like you won't be able to manage a full 2-hour count on one of the six days, we have other volunteers who can. It's very important to have continuity in the data base by capturing a full 2 hours on one of those six days, otherwise the numbers cannot be used for statistics.

Gas prices have increased, we're in a recession, people are more concerned with reducing their greenhouse gas emissions than ever before. Other communities are reporting increases, we *think* it's also happening here. Your help will let us measure what people are doing.

Contact Ralph Fertig by phone 962-1479 or by email at sb-ralph@cox.net for changes or if you have questions. Please return your completed sheet to the Santa Barbara Bicycle Coalition, PO Box 92047, Santa Barbara CA 93190 as soon as you're done.

Santa Barbara Bicycle Coalition • Bicyclist Action Record Form 2009

Person _____

Location _____

Date _____

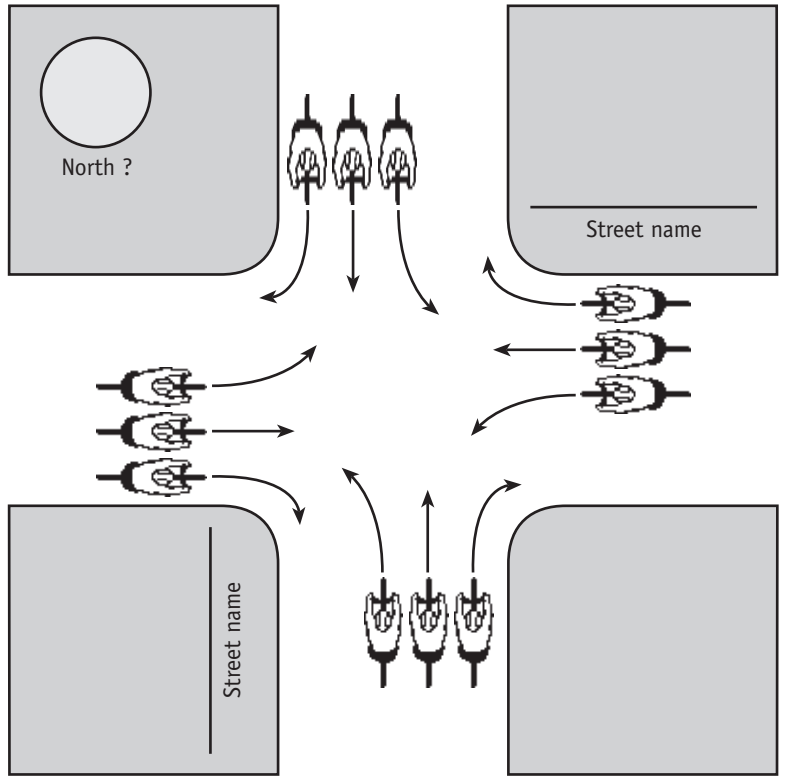
Weather _____

Time 4:00 PM to 6:00 PM

Helmet? _____

On sidewalk? _____

Wrong way on street? _____



	NORTH BOUND			SOUTH BOUND			EAST BOUND			WEST BOUND		
	L	Thru	R	L	Thru	R	L	Thru	R	L	Thru	R
4:00-4:15												
4:15-4:30												
4:30-4:45												
4:45-5:00												
5:00-5:15												
5:15-5:30												
5:30-5:45												
5:45-6:00												
TOTALS												